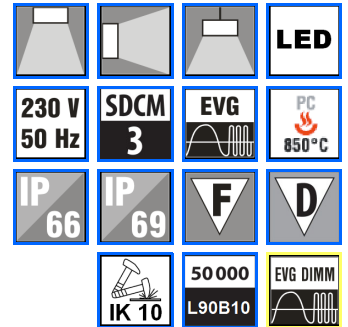


# Vega



## Body:

made of PC with ventilation membrane against condensation or made of ABS

## Optic:

diffuser made of PC or AC (version with ABS body)

SB – standard optic

WB – wide beam, for rooms with low ceilings

NB – narrow beam, for rooms with higher ceilings (8 – 12 m)

## LED:

lifetime 5000 h / L90B10

CRI 80:

3... 3000K

4... 4000K (standard)

5... 5000K

6... 6500K

CRI 90:

3... 3000K

4... 4000K

## Wiring:

ND – not dimmable (standard)

DALI – dimmable DALI

I or class II insulation (II class – only SB version)

## Application:

Surface or pendant installation, for ambient temperature  $t_a=45-50^{\circ}\text{C}$

Individually installed or for installation in lines (option)

1x3P – individually installed/terminal with 3-pole connector\*

1x5P – individually installed/terminal with 5-pole connector\*\*

1x7P – terminal luminaire with 7-pole connector\*\*\*

2x3P – throughwiring with 3-pole connector for installation in lines\*

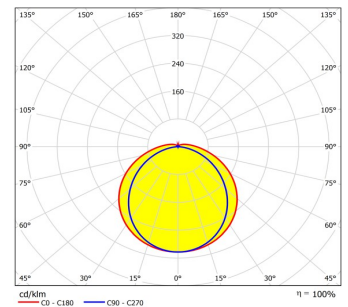
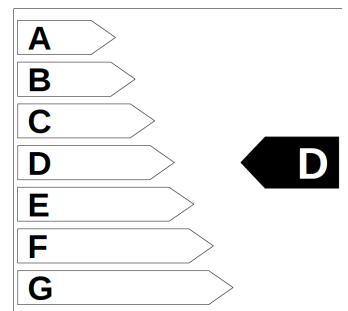
2x5P – throughwiring with 5-pole connector for installation in lines\*\*

2x7P – throughwiring with 7-pole connector for installation in lines\*\*\*

\* - only ND version

\*\* - ND or DALI versions

\*\*\* - only DALI version



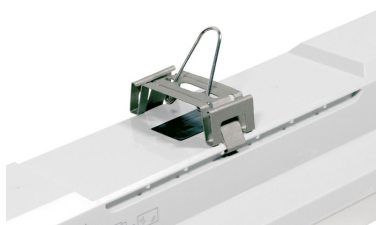
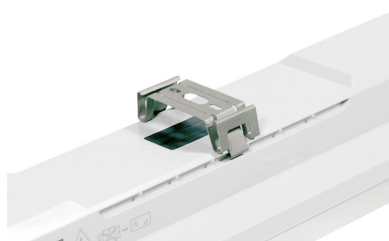
VEGA 1.4ft SB PC 6400

Direct wall/ceiling holder

Hook for suspension

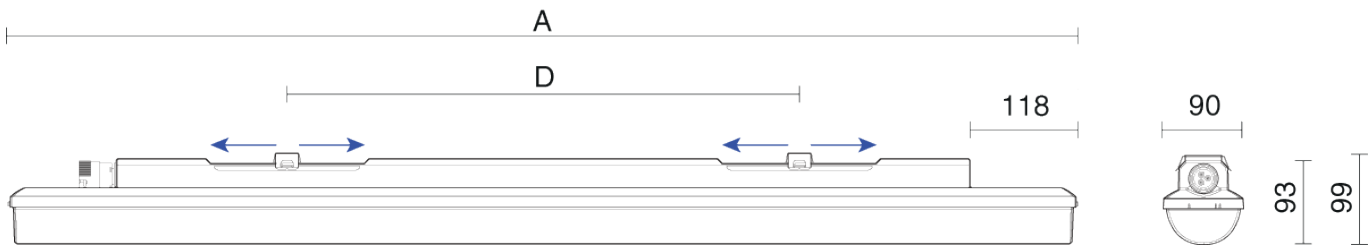
Interconnection

Connector



**Codes: VEGA 1.4ft NB PC 4400/840 1x3P ND**

VEGA 1.	4ft	NB	PC	4400	/840	1x3P	ND
Luminaire type	Body length: 4ft = 1175 mm 5ft = 1455 mm	Optic: SB – standard WB – wide beam NB – narrow beam	Material: PC – body and cover made of polycarbonate ABS – body made of PC, cover made of AC	Light output of LEDs	CRI and color temperature an: 8 = Ra80 9 = Ra90 3 = 3000K 4 = 4000K (standard) 5 = 5000K (only Ra80) 6 = 6500K (only Ra80)	Destination and numbers of poles: 1x – individually or terminal 2x – for lines 3P, 5P, 7P – number of poles	Driver type: ND – no dimmable DALI – dimmable DALI



	W	lm (PC)	lm (ABS)	ta	%	A	D	kg
VEGA 1.4ft % (PC) 2600/840 Y #	16	2430	2400	50	SB, WB	1175	420-700	1,5
VEGA 1.4ft % (PC) 3200/840 Y #	20	2920	2890	50	SB, WB	1175	420-700	1,5
VEGA 1.4ft % (PC) 4400/840 Y #	27	4090	4050	45	SB, WB, NB	1175	420-700	1,5
VEGA 1.4ft % (PC) 6400/840 Y #	38	5880	5820	45	SB, WB, NB	1175	420-700	1,5
VEGA 1.4ft % (PC) 8800/840 Y #	51	8190	8100	40	SB	1175	420-700	1,6
VEGA 1.5ft % (PC) 3250/840 Y #	20	3050	3010	50	SB, WB	1455	700-980	1,8
VEGA 1.5ft % (PC) 4000/840 Y #	24	3650	3610	50	SB, WB	1455	700-980	1,8
VEGA 1.5ft % (PC) 5500/840 Y #	33	5090	5040	45	SB, WB, NB	1455	700-980	1,8
VEGA 1.5ft % (PC) 8000/840 Y #	45	7280	7200	45	SB, WB, NB	1455	700-980	1,8
VEGA 1.5ft % (PC) 11000/840 Y #	71	11330	11210	40	SB	1455	700-980	1,9

% - optic: SB; WB; NB

(PC) – material: PC+PC; ABS+AC

840 – 8 = Ra>80 (standard); 9 = Ra>90 (on request); 3 = 3000K; 4 = 4000K (standard); 5 = 5000K; 6 = 6500K;

Y - destination and numbers of poles (1x; 2x; 3P; 5P; 7P)

# - wiring

lm – luminaire light output for standard optic (SB)