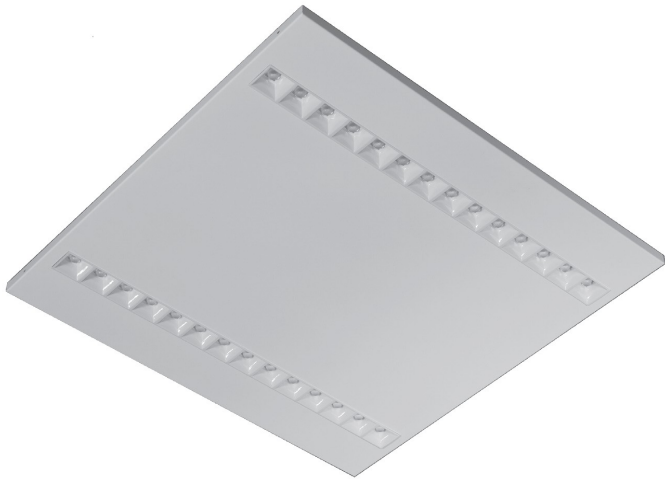



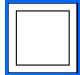

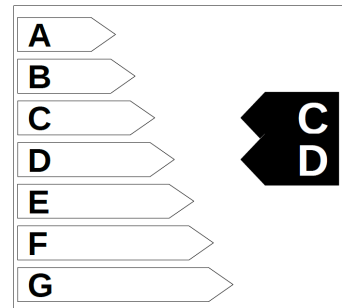


Superba ES



		LED	230 V 50 Hz
240 V 50 Hz	IP 20		CRI 80
	80000 L80B50	UGR <16	
			CRI 90+



Body:

White (black) painted metal sheet

Optic:

PC reflector + clear PMMA lens

B50 – white reflector with lens 50°

B80 – white reflector with lens 80°

C50 – black reflector with lens 50°

C80 – black reflector with lens 80°

Application:

recessed installation into modular ceiling 600 or 625 mm

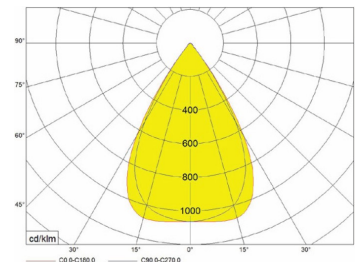
using accesories the panel can be also installed as surface or recessed into a gypsum plasterboard

Accessories:

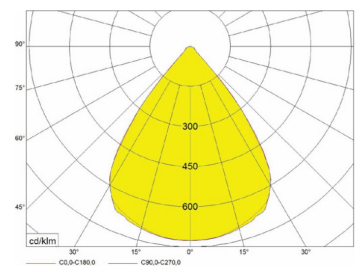
UQRAM – white painted aluminium frame for surface installation

QVESTRAM – white painted aluminium frame for recessed installation into a gypsum plasterboard

VESTRAMA600 – white painted metal frame for recessed installation into gypsum



EPS B50



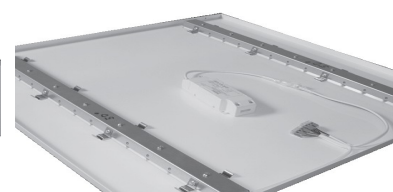
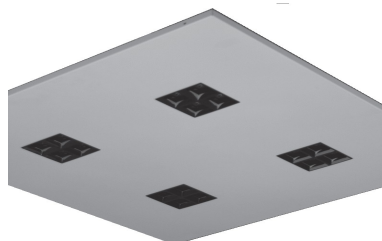
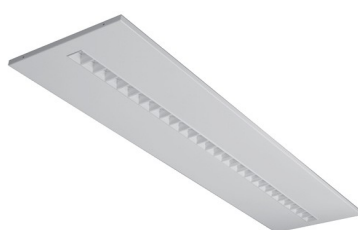
EPS B80

Optic ES

ES..C/1

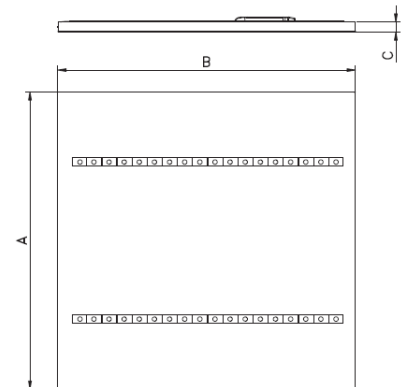
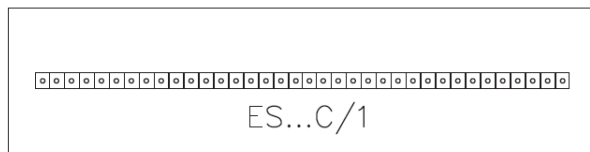
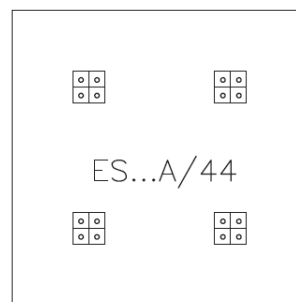
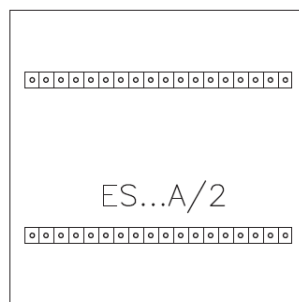
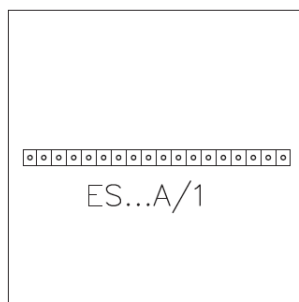
ES...A/44

DRIVER



Codes: ES3000A3BB80/2/600/ND

EPS	3000	A	3	B	B80	/2	/600	/ND
Luminaire type								
Light output								
Body shape:		A – square 600x600 mm C – rectangle 300x1200						
Color temperature:			2 = 2700K 3 = 3000K 4 = 4000K 5 = 5700K					
Body color:				B – white C – black				
Optic:					B – white louvre C – black louvre 50 – narrow 50° 80 – wide 80°			
Nr of LED modules								
Modul								
Driver type:								ND – no dimmable DALI – dimmable DALI



	W	lm		modul 600		modul 625		C	kg
		B50, B80	C50, C80	A	B	A	B		
Superba ES1500A /1	11	1400	1250	596	596	622	622	25	1,8
Superba ES3000A /1	22	3000	2700	596	596	622	622	25	1,8
Superba ES3000A /2	23	2900	2600	596	596	622	622	25	2
Superba ES4000A /2	28	4400	4000	596	596	622	622	25	2
Superba ES6000A /2	42	6100	5500	596	596	622	622	25	2
Superba ES3000A /44	18	2750	2400	596	596	622	622	25	2
Superba ES4000A /44	27	3900	3500	596	596	622	622	25	2
Superba ES3000C /1	23	2900	2600	1196	296	1245	310	25	2
Superba ES4000C /1	28	4400	4000	1196	296	1245	310	25	2
Superba ES6000C /1	42	6100	5500	1196	296	1245	310	25	2

lm – luminaire light output

Due to program of products development a data can be changed without notice. Luminous flux and connected electrical load are subject to an initial tolerance of up to +/- 10%. Color temperature is subject to a tolerance of up to +/-150 K from the nominal value. The failure of 1 LED points causes no functional impairment to the lighting performance of the luminaire and is therefore no reason for complaint.