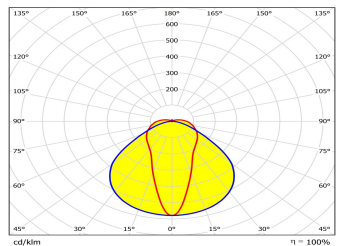
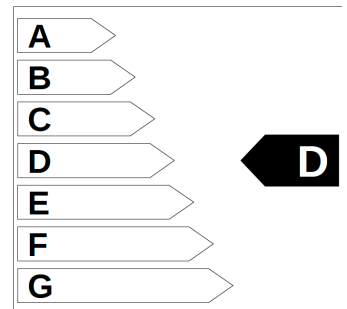
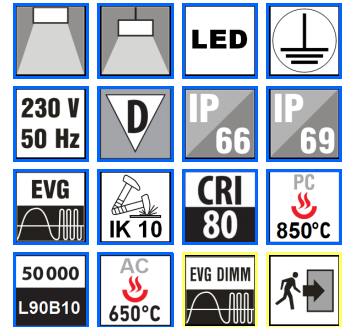
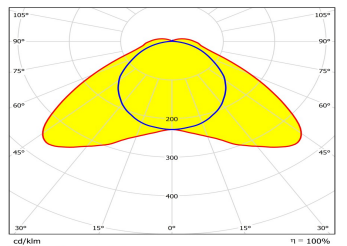


Polaris N, W



POLARIS 1.4ft N PC 6400/840



POLARIS 1.4ft W PC 6400/840

Body:

the body is made by injection of:
 grey polycarbonate (PC)
 grey ABS
 the clips are made of polyamide + 15% glass fibre or INOX.

Reflector:

steel sheet powder coated with white colour.

Diffuser:

transparent PC with nanooptics, UV stable (IK10)
 transparent AC with nanooptics, UV stable (IK06)

LED:

CRI>80, 4000 K (standard), 3000K, 5000K, 6500K
 optional CRI>90, 3000K, 4000K, 5000K, 6500K

Wiring:

LED current driver
 ND - not-dimmable LED driver (standard)
 DALI - DALI dimmable LED driver
 Possibility to through-wiring
 M1h, M3h – emergency back up source with 1 or 3 hour operating time for maintained emergency illumination

Application:

Industrial indoor or outdoor areas, workshops, sport halls, agricultural buildings, garages, warehouses and laboratories without danger of explosion.
 N version – for high rooms (7,5 m – 12 m: narrow beam)
 W version – for low rooms (2,5 m – 4 m: wide beam)

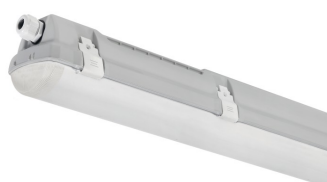
Note:

surface or suspension mounting
 can be attached to a track lighting system with a width of 60 mm

POLARIS PC



POLARIS ABS

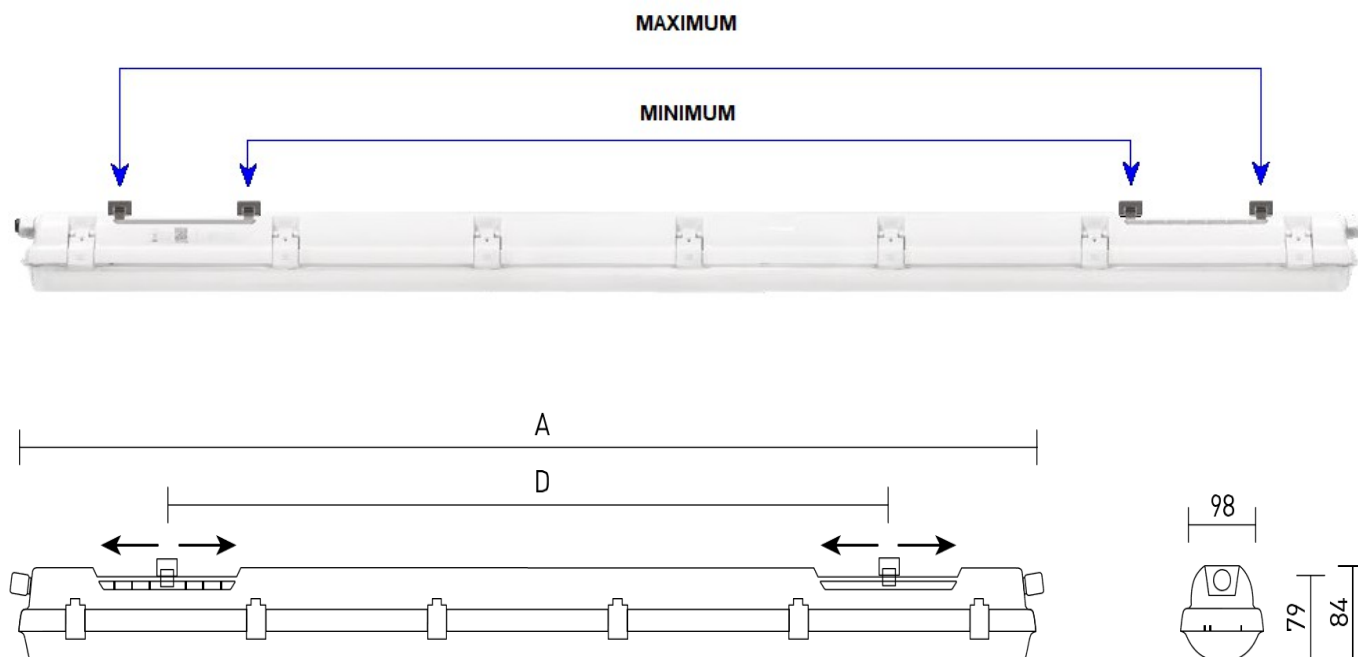


Suspension pendant



Profile





POLARIS N	W	Em	ta [°C]	lm (ABS)*	lm (PC)*	A	D	kg
POLARIS 1.5ft N & 4400/840 #	30	M1h, M3h	45	3710	4000	1175	700 – 960	1,7
POLARIS 1.5ft N & 6400/840 #	43	M1h, M3h	45	5400	5820	1175	700 – 960	1,7
POLARIS 1.5ft N & 5500/840 #	37	M1h, M3h	45	4640	5000	1455	970 – 1230	2,0
POLARIS 1.5ft N & 8000/840 #	54	M1h, M3h	45	6760	7280	1455	970 – 1230	2,0

POLARIS W	W	Em	ta [°C]	lm (ABS)*	lm (PC)*	A	D	kg
POLARIS 1.4ft W & 2600/840 #	9	M1h, M3h	50	2220	2400	1175	700 – 960	1,7
POLARIS 1.4ft W & 3200/840 #	11	M1h, M3h	50	2730	2960	1175	700 – 960	1,7
POLARIS 1.4ft W & 4400/840 #	15	M1h, M3h	45	3760	4070	1175	700 – 960	1,7
POLARIS 1.4ft W & 6400/840 #	18	M1h, M3h	45	5470	5920	1175	700 – 960	1,7
POLARIS 1.5ft W & 3250/840 #	22	M1h, M3h	50	2770	3000	1455	970 – 1230	2,0
POLARIS 1.5ft W & 4000/840 #	27	M1h, M3h	50	3420	3700	1455	970 – 1230	2,0
POLARIS 1.5ft W & 5500/840 #	37	M1h, M3h	45	4700	5080	1455	970 – 1230	2,0
POLARIS 1.5ft W & 8000/840 #	54	M1h, M3h	45	X	7400	1455	970 – 1230	2,0

lm - luminous flux of light fitting

* - according to the order

Em – with emergency source 1h or 3h

add to basic code:

& - PC / ABS; # - ND, DALI

Due to program of products development a data can be changed without notice. Luminous flux and connected electrical load are subject to an initial tolerance of up to +/- 10%. Color temperature is subject to a tolerance of up to +/-150 K from the nominal value.

The failure of 1 LED points causes no functional impairment to the lighting performance of the luminaire and is therefore no reason for complaint.