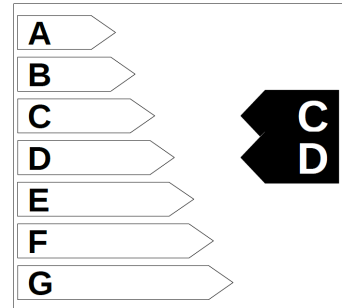
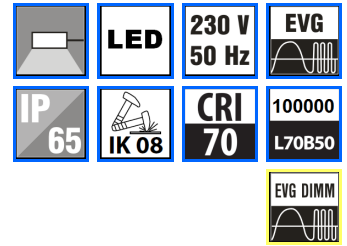


# Nekkar



**Body:**  
High quality aluminium body finished in grey colour, stainless clips

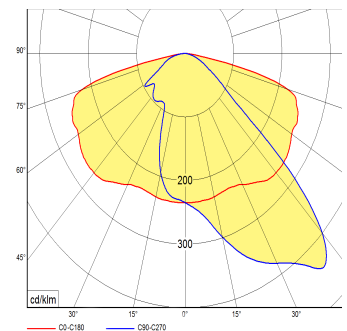
**Optic:**  
OS – lens with very wide asymmetrical beam  
AS – asymmetric optic  
Tempered 4 mm glass cover

**LED:**  
High power LED  
2200K – warm white – OS only / not possible for AS version  
2700K – warm white – OS only / not possible for AS version  
3000K – warm white – OS only / not possible for AS version  
4000K – daylight (standard)  
5000K – cold white (standard for AS version)

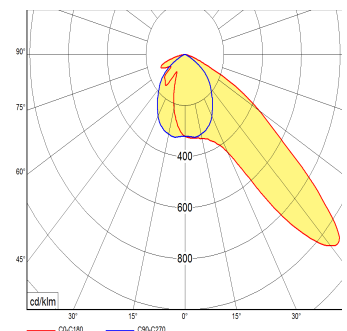
**Wiring:**  
ND – not dimmable  
3DIM – dimmable driver OSRAM 4DIM

**Application:**  
Multi-purpose exterior fitting for roads, streets, park lots, paths and others applications.  
Mounting module is fixed to any post top or side entry spigot 42-60 mm  
Adjusting angle -30° do +90°  
Optimal for 6-10 m posts

**Accessories:**  
PR42/60 – flange reduction 42 mm / 60 mm  
245039902 – wall holder



NEKKAR 7500



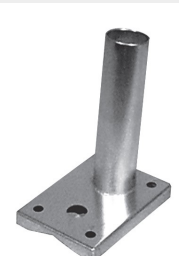
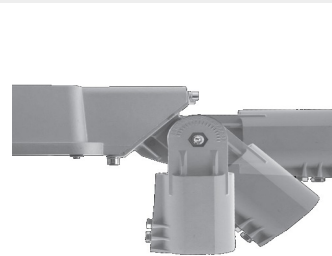
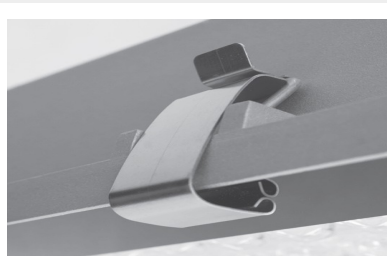
NEKKAR AS

Inox clip

Optical system

Flange for post

Wall holder

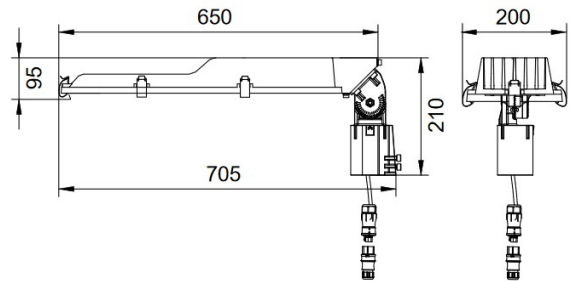
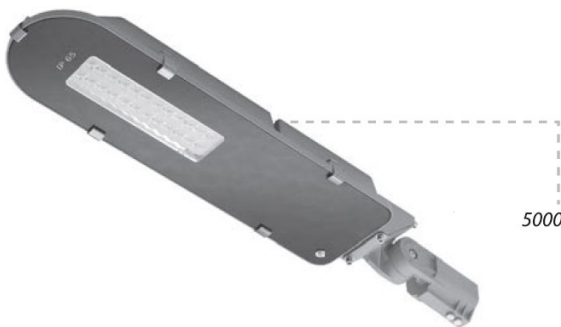


Codes: NEKKAR5000V23/3DIM

NEKKAR	5000	V2	3	/3DIM
Luminaire type				
Optic: wide beam AS – asymmetric optic				
Light output				
Used LEDs				
Color temperature: 2 = 2700K 3 = 3000K 4 = 4000K 5 = 5000K				
Driver type: ND – no dimmable 3DIM – dimmable DALI/STEPDIM/ASTRODIM				

NEKKAR	3500	5000	7500	9000
Power	30 W	47 W	58 W	88 W
Luminaire light output	3900 lm	5700 lm	7700 lm	11200 lm
Efficiency	130 lm/W	121 lm/W	133 lm/W	127 lm/W
Conventional lamps equivalent *	70 W	70 W 100 W	100 W	150 W

\* - approximate comparison, does not replace light calculation



	W	lm 2200K	lm 2700K	lm 3000K	lm 4000K	lm 5000K	kg
NEKKAR3500 ND	28	2000	3070	3100	3160	3200	7
NEKKAR3500 3DIM	30	2700	3740	3780	3860	3900	
NEKKAR5000 ND	38	3500	4800	4850	4950	5000	
NEKKAR5000 3DIM	47	3900	5470	5530	5650	5700	
NEKKAR7500 3DIM	58	5300	7400	7470	7600	7700	
NEKKAR9000 3DIM	88	7750	10750	10860	11080	11200	

	W	lm	lm/W	kg
NEKKARAS5000ND	56	7100	127	7

lm – luminaire light output  
V21 = 2200K, V22 = 2700K, V23 = 3000K, V24 = 4000K, V25 = 5000K

Due to program of products development a data can be changed without notice. Luminous flux and connected electrical load are subject to an initial tolerance of up to +/- 10%. Color temperature is subject to a tolerance of up to +/-150 K from the nominal value.  
The failure of 1 LED points causes no functional impairment to the lighting performance of the luminaire and is therefore no reason for complaint.