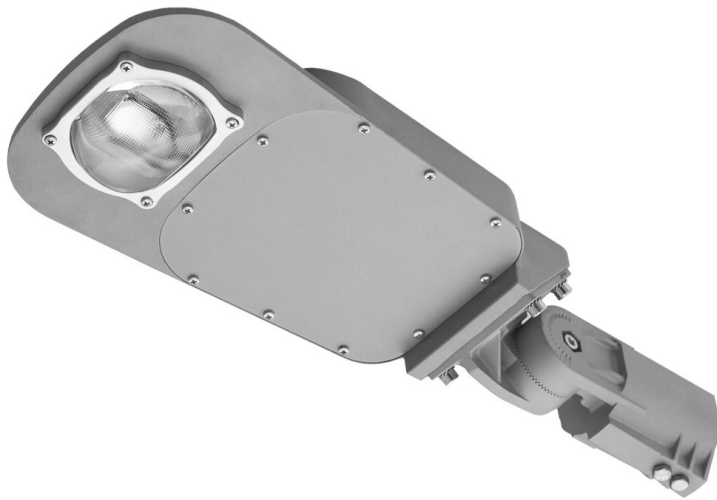




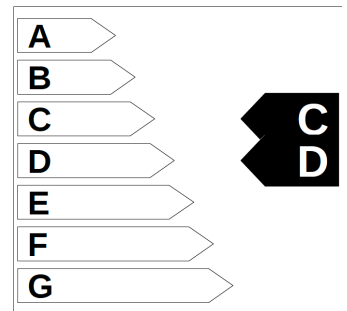


# Felis



	<b>LED</b>	<b>230 V</b> <b>50 Hz</b>	<b>EVG</b> 
<b>IP 65</b>	<b>IK 08</b> 	<b>CRI 70</b>	<b>100000</b> <b>L70B50</b>
<b>EVG DIMM</b> 			



**Body:**  
Polyester powder painted non-corrosive high-pressure diecast aluminium

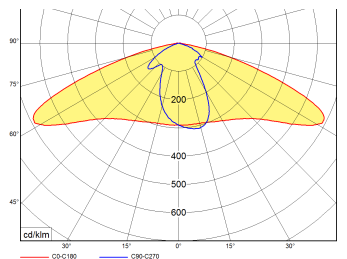
**Optic:**  
Asymmetric glass optic  
STL C – optic for roads  
STL P – optic for open areas

**LED:**  
3... 3000K  
4... 4000K  
5... 5000K

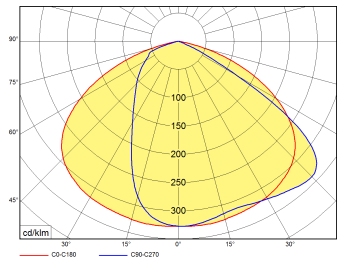
**Wirng:**  
ND – no dimmable LED driver  
4DIM – dimmable DALI/STEPDIM/ASTRODIM

**Application:**  
Mounting module is fixed to any post top 42 to 60 mm or side entry spigot from 42 to 60 mm  
Adjusting angle from  $-30^{\circ}$  to  $+90^{\circ}$   
Recommended height of installation 4-8 m.

**Accessories:**  
PR42/60 – flange reduction 42 mm / 60 mm  
245039902 – wall holder



FELIS C

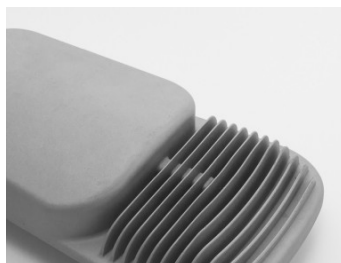


FELIS P

Optics lighting



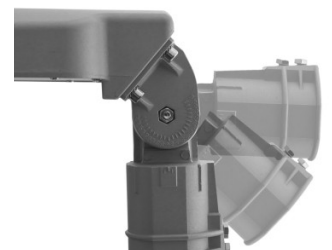
Lighting cooler



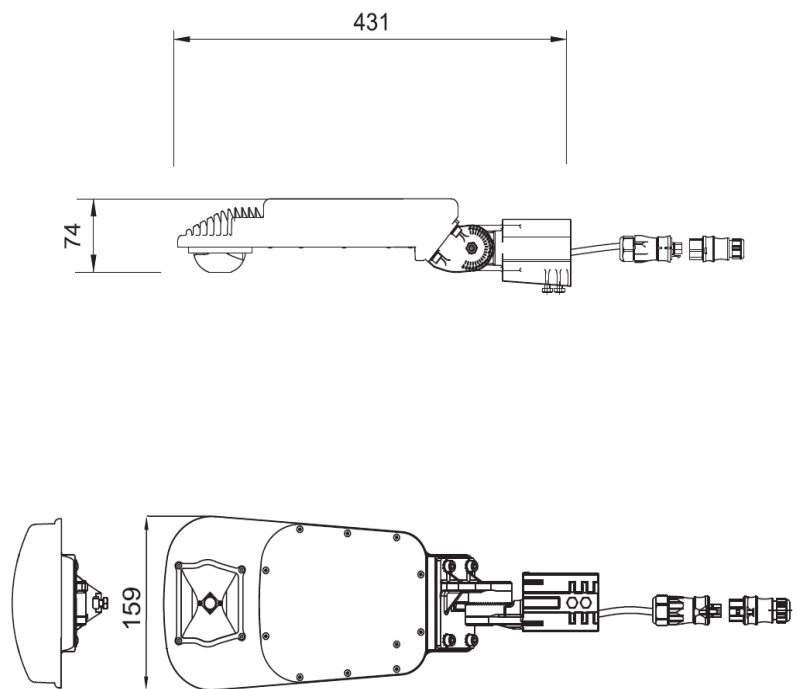
Side view



Adjustable flange



FELIS	4000	C	3	ND
Luminaire type	Luminaire light output	Optic: C – roads P – open area	Color temperature: 3 = 3000K 4 = 4000K 5 = 5000K	Driver type: ND – no dimmable 4DIM – dimmable DALI



	W	lm (C)	lm (P)	kg
FELIS4000	27	4000	4000	5
FELIS6000	39	5600	5600	5
FELIS8000	60	8700	8800	5

lm – luminaire light output